



## How can Children's University support the new Ofsted Inspection Framework?

We are very aware that Children's University is a fantastic way for schools to evidence they are meeting the Personal Development requirements of the new Ofsted Inspection Framework as we -

- Provide a framework for pupils' broader development enabling them to develop and discover their interests and talents
- support pupils to develop their character – including their resilience, confidence and independence – and help them know how to keep physically and mentally healthy
- equip them to be responsible, respectful, active citizens who contribute positively to society
- prepare learners for future success in their next steps

  
**Ofsted**

# Welcome!

## Welcome to the Lancashire Children's University Spring 2020 newsletter!

We have lots to report on. Louise has been out and about across the whole of Lancashire delivering assemblies, validating Learning Destinations and meeting with students.

A big welcome to the latest schools to join Children's University - Euxton Primrose Hill Primary School and Deepdale Community Primary School. We are thrilled to be working with you and look forward to seeing you at your first graduation.

Unfortunately our Children's University App is no longer in use but we have a new website! On there you can search for Learning Destinations across the whole

country and in your local area. We are in the process of moving all of our validated Learning Destinations across from the App, so please bear with us as this will take some time, but as long as a Learning Destination has been validated it will still count! Getting clubs validated is now much easier too...just tell the leader to log on to [www.childrensuniversity.co.uk](http://www.childrensuniversity.co.uk) and go to 'Get involved', 'Learning Providers', 'Add activity' and then complete our short form.

**Laura Grigsby**  
Lancashire CU Manager  
[laura.grigsby@elevate-ebp.co.uk](mailto:laura.grigsby@elevate-ebp.co.uk)

## Graduations 2019

Our ceremonies this year took place in various locations throughout Lancashire. We had over 1,300 graduates across the region who graduated at Edge Hill University, Lancaster University, UCLan Preston and Life Church Burnley. We also had some wonderful guest speakers who ranged from business owners and Learning Destinations to University Lecturers. We truly hope that all of the graduates felt inspired by the speakers and the events and continue to participate in even more extra-curricular learning over the coming years! Don't forget pupils' credits will always be there to be built on and added to every year!



## Contact details

[louise.waller@elevate-ebp.co.uk](mailto:louise.waller@elevate-ebp.co.uk)  
[laura.grigsby@elevate-ebp.co.uk](mailto:laura.grigsby@elevate-ebp.co.uk)  
0151 330 5758

[www.childrensuniversity.co.uk](http://www.childrensuniversity.co.uk)

Follow us on Facebook and Twitter  
[@LancashireCU](https://www.facebook.com/LancashireCU)



# Preparing for British Science Week 2020



Look out for our British Science Week events during March this year, we will send details in to schools and post them on our Facebook and Twitter pages!

## Holiday Challenges

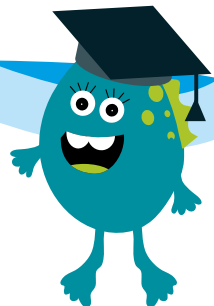
Look out for our Holiday Challenge sheet that comes out each half term holiday. We will publish this on our social media pages so make sure you are following us on Facebook and Twitter @LancashireCU. The challenges are a great way for pupils to gain extra credits...all they have to do is complete a challenge and then either bring the evidence into school or simply take a picture of it and send it to Louise at [louise.waller@elevate-ebp.co.uk](mailto:louise.waller@elevate-ebp.co.uk) and she will add the credits for them. Having a go at each of our holiday challenges is a great way to gain those extra credits!



Alivia from Padiham Green made her own juicy lollipops to gain a credit



Quintin from St Augustine's completed the SCART club summer reading challenge



## Learning Destination Watch

Since our last newsletter we have validated lots of new Learning Destinations (places where you can take your passport to be stamped!) So....a warm welcome to:

1st Euxton (ROF) Chorley Scout Group, 5th Aughton Brownies, 54th Burnley Brownies, Active Nation Leisure Centres, Act One Beginners, AFC Wolves, Burnley Literary Festival, Burnley Pendle and Rossendale Sea Cadets, Chorley Sea Cadets, Encore Dance, Euxton Park Golf Centre, Footlights Burnley, Glover's Swim School, Gracie Barra Brazilian Jiu Jitsu, Health 4 Juniors, Lancashire Youth Performing Arts, Petite Acting Academy, Rugby Tots Chorley

Remember, if you go to any type of club or venue outside of school hours, why not ask them to sign up and become a Learning Destination? They just need to visit our website at [www.childrensuniversity.co.uk](http://www.childrensuniversity.co.uk) and go to 'Get involved', 'Learning Providers', 'Add activity' and then complete our short form. Louise will then be in touch to get them validated...it is really that simple!



Emily enjoying the Butterfly house at Williamson Park in Lancaster



Joseph enjoying a day out at Heysham Power Plant Visitors Centre

## The 6 Golden rules for gaining credits!

- 1 Learning must be voluntary
- 2 Learning must be outside of the school curriculum
- 3 There must be structured learning taking place
- 4 Pupils can gain no more than 10 credits per activity per term
- 5 All passport credits must be gained at a validated Learning Destination.
- 6 Passports will be stamped, not signed!

## Contact details

[louise.waller@elevate-ebp.co.uk](mailto:louise.waller@elevate-ebp.co.uk)  
[laura.grigsby@elevate-ebp.co.uk](mailto:laura.grigsby@elevate-ebp.co.uk)  
 0151 330 5758

[www.childrensuniversity.co.uk](http://www.childrensuniversity.co.uk)

Follow us on Facebook and Twitter  
 @LancashireCU

